

PERSONAL NAVIGATOR

MONDAY, APRIL 29, 2013

Sunrise: 6:35 a.m. Sunset: 7:39 p.m.

Evening Attire: Optional Dress Up

All Ashore: 9:30 a.m.

All Aboard: 2:00 a.m.

Gangway: Deck 1, Midship. Deck 1, Forward 


Monday: Cloudy High: 75°F/24°C

Tuesday: Cloudy High: 75°F/24°C

NASSAU



WALT DISNEY THEATRE
DECKS 3 & 4, FORWARD
6:15 P.M. & 8:30 P.M.

 Assistance available at the entrance to the Walt Disney Theatre 30 minutes prior to show time.

Nassau Port Information

While you will find many great experiences in Nassau, there have been reports of increased crime, including assaults and robberies involving tourists in the area. As in any large city, you'll want to take some basic precautions to make the most of your time ashore.

- Be aware of your surroundings at all times, just as you would in your normal daily activities.
- Avoid short cuts, narrow alleys or poorly lit streets. We recommend that guests only visit the downtown shopping areas and other tourist locations.
- Leave valuables in your room safe and avoid carrying large amounts of cash. Exercise caution when using ATMs. Cameras and handbags should be carried out of sight and secured to your person with a strap.
- Leave passports, air transportation tickets and other travel documents in your room safe. When going ashore, each adult is required to carry a Driver's license, copy of passport or other government-issued photo ID.
- If traveling by taxi, use only licensed taxi operators.
- In general, use the same level of precaution you would use in any tourist destination.
- Most crimes are easier to commit in dark unlit areas. You should stay out of these types of areas and consider returning to the ship before nightfall. If you stay out at night, please be extra vigilant about your personal safety.

Disney's
Mirror Mirror
GAME SHOW

Join the Magic Mirror and Dopey in the fairest game show of them all, Mirror, Mirror. There's trivia, singing and even a relay race. Hi Ho, Hi Ho, its off to play we go!

5:30 p.m. & 10:15 p.m.
D Lounge,
Deck 4, Midship

Don't Miss:

Making of the Dream

Evolution, Deck 4, Aft - 11:30 a.m. (Families)

Evolution (18+), Deck 4, Aft - 2:00 p.m. (Adults)

Explore the origins of Disney Cruise Line - and the latest and greatest innovations conjured especially for the Disney Dream, in this fascinating and entertaining behind-the-scenes program.

Disney Animation: Creating a Character

D Lounge, Deck 4, Midship - 2:00 p.m.

Go behind the scenes at Walt Disney Animation Studios as Walt Disney himself talks about his most famous characters, then learn the basic techniques of drawing Mickey and Donald in this fun and interesting enrichment program.

Family Dream Quest

Evolution, Deck 4, Aft - 7:30 p.m.

Enjoy the wildest and wackiest scavenger team event on the seven seas!

Match Your Mate

Evolution (18+), Deck 4, Aft - 10:30 p.m.

It's time to play everyone's favorite couples game show, Match Your Mate!



Welcome to Nassau, capital of the Bahamas. It is not too late to book an amazing adventure to Blue Lagoon Island, Atlantis, or you could book a snorkeling adventure.

All Port Adventures meet onboard the ship in Nassau. Please check your tour tickets for meeting times and locations.

DINNER MENU

Animator's Palate: Pacific Rim Cuisine
Enchanted Garden: Continental Market
Royal Palace: French Dinner

DRINK OF THE DAY

BBC (Alcoholic)
Parrot Song (Non Alcoholic)

IMPORTANT NUMBERS

Fire/Security: 7-3001
Medical Emergency: 7-3000
Health Center: 7-1923

FAMILY ACTIVITY HIGHLIGHTS

MOVIE CHALLENGE POOLSIDE

Deck Stage, Deck 11, Midship - 1:00 p.m.

Come on out to watch all your favorite movie clips and just maybe your team will win the opportunity to choose the movie played by the pool today!

FAMILY CRAFTS

D Lounge, Deck 4, Midship - 1:15 p.m.

Create a fun souvenir with your Cruise Staff that is yours to keep.



CHIP IT GOLF (12+)

Lobby Atrium, Deck 3, Midship - 1:45 p.m.

It's par for the course for our Guests 12 and older to compete on our special "greens" in this fun tournament.

DISNEY ANIMATION: CREATING A CHARACTER

D Lounge, Deck 4, Midship - 2:00 p.m.

Go behind the scenes at Walt Disney Animation Studios as Walt Disney himself talks about his most famous characters, then learn the basic techniques of drawing Mickey and Donald in this fun and interesting enrichment program.

DISNEY VACATION CLUB® GROUP PRESENTATION

Evolution, Deck 4, Aft - 4:30 p.m.

Want to learn more about taking magical vacations year after year? Stop by our interactive group presentation to find out more information from a Disney Vacation Club representative.

MIRROR, MIRROR

D Lounge, Deck 4, Midship - 5:30 & 10:15 p.m.

Join the Magic Mirror and Dopey in the fairest game show of them all, Mirror, Mirror. There's trivia, singing and even a relay race. Hi Ho, Hi Ho, its off to play we go!

FAMILY SUPERSTAR KARAOKE

D Lounge, Deck 4, Midship - 9:30 & 11:15 p.m.

Calling all singing superstars! Join your Cruise Staff in D Lounge and sing along to your favorite song - fun for everyone.



ADULT ACTIVITY HIGHLIGHTS



SENSES SPA FITNESS CLASSES & SEMINARS

Body Sculpt Boot Camp - Goofy's Sports Deck - 7:30 a.m.

Wake Up & Stretch Class - Senses Spa & Salon - 8:15 a.m.

Group Cycling (Sign-Up Required) - Senses Spa & Salon - 9:00 a.m.

Detox for Health & Weight Loss - Senses Spa & Salon - 10:00 a.m.

Acupuncture Seminar: A Life Changing Experience - Senses Spa & Salon - 11:00 a.m.

Good Feet Seminar: Relieving Back Pain - Senses Spa & Salon - 4:00 p.m.

Pathway to Pilates - Senses Spa & Salon - 5:00 p.m.

TASTING CLASSES

Mixology - Skyline - 4:00 p.m.

Whiskey Tasting - Meridian - 9:00 p.m.

Champagne Tasting - Pink - 4:00 p.m.

Cognac Tasting - Meridian - 10:30 p.m.

Please make reservations for tastings at Guest Services for a nominal fee. Tasting Seminars are only for Guests 21 and Older.

CLUB
18*21

MINI GOLF

Goofy's Sports Deck, Deck 13, Aft - 4:45 p.m.

MIX AND MINGLE

Evolution, Deck 4, Aft - 10:00 p.m.

MAKING OF THE DREAM

Evolution, Deck 4, Aft - 2:00 p.m.

Explore the origins of Disney Cruise Line and the latest and greatest innovations conjured especially for the Disney Dream in this fascinating and entertaining behind-the-scenes program.

ART OF THE THEME SHOW TOUR

Meet at Meridian, Deck 12, Aft - 2:45 p.m.

A walking tour that highlights the ship's design, emphasizing Disney culture, themeing and artistry.



PULSE FEATURING THE EVOLUTION DANCERS & GUEST DJ MIKE WEST

Evolution, Deck 4, Aft - 11:15 p.m.

Dance the night away as our Guest DJ Mike West spins all the latest mixes from today with some 90's classics thrown in for you to get down!

\$5,000 MEGA JACKPOT BINGO

D Lounge, Deck 4, Midship

Card Sales - 4:00 p.m.

Game Starts - 4:15 p.m.

Join your Cruise Staff for four CASH prize games. Cover your card in 46 numbers or less, and \$5,000 could be yours. If not, we continue to play for the highest cash prize of the session!



SENSES SPA BINGO

D Lounge, Deck 4, Midship

Card Sales - 7:15 p.m.

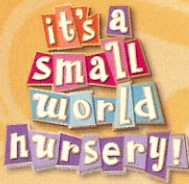
Game Starts - 7:30 p.m.

Four CASH prizes up for grabs, plus great spa prizes to be won, including facials and massages courtesy of the Senses Spa & Salon. Also, the snowball jackpot continues to grow and could be won today!

YOUTH ACTIVITY HIGHLIGHTS

DINE & PLAY

A convenience for families dining at 8:15 p.m., our Youth Activities Counselors will be available at 9:15 p.m. at the entrance of Royal Palace, Enchanted Garden and Animator's Palate dining rooms to bring registered children to join the fun in the Youth Activity areas.



Deck 5, Midship (7-5864) 9:00 a.m. - 12:00 a.m.

OPEN HOUSE

8:00 a.m. - 9:00 a.m.

Your chance to see our toddler space, It's A Small World Nursery.



Deck 5 Midship (7-1440) 11:30 a.m. - 12:00 a.m.

BIG TOP FUN FEST!

11:30 a.m.

It's the greatest show on Earth. Come re-discover the circus Disney style with clowns, jugglers and classic Disney cartoons.

TOY STORY BOOT CAMP

6:15 p.m.

Join Corporal Green in our own version of boot camp as we learn how to have fun - The Toy Story way!



Deck 5 Midship (7-1445) 9:00 a.m. - 1:00 a.m.

GET THE HOOK

2:00 p.m.

A villainous villain has stolen Captain Hook's prized golden hook. Become a member of the Top Deck Detective Agency and help solve the clue's to retrieve Hook's hook.

PIRATES OF THE CARIBBEAN: TIDES OF FORTUNE

10:00 p.m.

Inspired from the Pirates of the Caribbean saga, during this interactive computer game, cruisers in the Oceaneer Lab get a chance to sail the seven seas!



Deck 13 Midship (7-9743) 10:00 a.m. - 1:00 a.m.

ANIMATION ANTICS

3:00 p.m.

Learn simple animation techniques and then put your new skills to use by drawing some of your favorite Disney characters.

ANYONE CAN COOK

7:30 p.m.

Anyone can cook as we work together to create some of our favorite treats.



Entrance on Deck 4 Forward (7-9417)

11:00 a.m. - 2:00 a.m.

THAT'S HILARIOUS

3:00 p.m.

Ever wanted to show off your comedy skills? Then be a part of the cast for the crazy improv show "That's Hilarious" and put on a live show for your friends.

GHOST VOYAGERS

11:30 p.m.

The ship has come upon some mysterious waters and strange things are afoot. Join a paranormal expert to help investigate the area and track down any evidence of ghostly beings on the ship.

BUENA VISTA THEATRE

Today's Movies



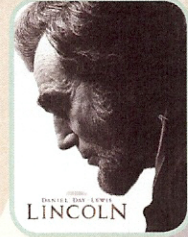
12:00 p.m. - 2D Version **PG**

10:30 p.m. - **DOLBY.3D**

Run Time:

1 hr 53 min

Rating: PG

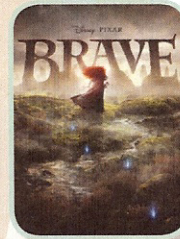


2:30 p.m.

Run Time:

2 hr 30 min

Rating: PG-13



5:45 p.m. & 8:15 p.m. - **DOLBY.3D**

Run Time:

1 hr 41 min

Rating: PG

Subject to change.



Hola Amigos! Consider this your exclusive invitation to a Latin dance party, that has all the trimmings of a proper fiesta. Learn to Salsa, Merengue and have a Latin good time!

**D Lounge,
Deck 4, Midship
10:45 p.m.**



GAME SHOW

It's time to play everyone's favorite couples game show - Match Your Mate!

**Evolution (18+),
Deck 4, Aft
10:30 p.m.**

YOUTH ACTIVITIES OPEN HOUSE

Open House is an opportunity for all to come and participate in a variety of exciting activities and free time in the Oceaneer Club, Lab and Edge throughout the cruise. During these times secured programming will still be offered in the other venue for those looking to check their children into care.

Vibe: 10:00 a.m. - 11:00 a.m.

Edge: 9:00 a.m. - 10:00 a.m.

Disney's Oceaneer Lab: 3:30 p.m. - 5:00 p.m.

Disney's Oceaneer Club: 9:00 a.m. - 11:30 a.m.

MORE TO ENJOY WHILE ONBOARD



BOOK YOUR NEXT CRUISE TODAY AND SAVE

Don't waste time, book your next cruise today. You'll save 10%, receive up to a \$200 onboard credit, and pay a reduced deposit! Tune to Channel 8 on your stateroom TV for details and visit the Future Cruise Sales Desk, Deck 4, Midship.



DISNEY VACATION CLUB® GROUP PREVIEW

Want to learn more about taking magical vacations year after year? Please see a Disney Vacation Club representative on Deck 4, Midship, or call 7-2805 from your stateroom phone for more information about our interactive group presentation.



DIAMONDS FOR BREAKFAST - NASSAU SHOPPING

8:00 a.m. to 10:00 a.m. Shopping Desk, Deck 4, Midship. This is your last chance to see Rachel! Make sure you collect your FREE Savings Ashore Kit and VIP Cards before going ashore. Rachel is also your onboard diamond & gemstone specialist and is here to ensure you are well taken care of in Nassau and get the highest quality merchandise and best deals.

ONBOARD AIRLINE CHECK IN

If you would like to have your boarding passes printed for you onboard and have your luggage taken to the airport for you, today at 8:00 p.m. is the last chance to enroll. If you have Disney Cruise Line airport transfer to Orlando International Airport and fly with one of the participating airlines. Please stop at Guest Services Desk, Deck 3, Midship.

FINE DINING RESERVATIONS

Treat yourself to the ultimate culinary experience at sea. At Remy and Palo the enchantment of sea meets with elegance for a once-in-a-lifetime dining experience. Service/Cover charges will apply, please call 7-9734 for reservations to secure the last available spots.

SURF @ SEA

\$0.75 per minute, or save money by buying blocks of time. \$27.50 for 50 minutes, \$40 for 100 minutes and \$75 for 250 minutes. Wireless information sheets are available at Guest Services, Deck 3, Midship. Please note: Due to satellite connectivity, onboard internet service will be noticeably slower than you may be accustomed to and may at times be interrupted or unavailable.



SENSES SPA & SALON

PAMPER PACKAGE


50 minute full body Swedish massage, foot and ankle massage, Indian scalp massage and 25 minute facial.
75 minute pamper for \$149.

Senses Spa, Deck 11, Forward, Ext 7-1465.

GUESS YOUR STYLE

Put together an entire image with Guess watches, sunglasses, and bags. Men's and women's watches are available featuring two-tone, silver, gold, and black-colored bands, with selected styles sparkling with Swarovski crystals. Guess bags shimmer and shine with the distinctive Guess logo and pattern artwork on functional bags that will compliment your style and suit your needs. Complete your look with designer eyewear that will serve as your signature touch.

WHITECAPS
Deck 3, Forward



PROFESSIONAL PORTRAITS TONIGHT!

Lifestyle – Six Guests maximum
Donald Statue – Groups accommodated

5:15 p.m. - 6:00 p.m.
7:15 p.m. - 8:30 p.m.
9:30 p.m. - 10:15 p.m.

**Please note that photos are available for viewing on our interactive photo kiosks approximately five hours after being taken and are only available for purchase during this cruise.*



Welcome to Nassau, capital of the Bahamas. It is not too late to book an amazing adventure to Blue Lagoon Island, Atlantis, or you could book a snorkeling adventure. And don't forget, we will be arriving to Disney's Castaway Cay tomorrow, so plan ahead to ensure your first choice of adventure is available. Also, ask our team about the exclusive Getaway Packages, available onboard only.

All Port Adventures meet onboard the ship in Nassau. Please check your tour tickets for meeting times and locations.

SHOPPING

Due to Port Regulations, our onboard shops are unable to open when the ship is in port. They will be closed all day today, and regular operating hours will resume tomorrow at 5:30 p.m. after we have left Castaway Cay.

We apologize for any inconvenience.

NEWLY ARRIVED PHILIP STEIN WATCHES

Founded in 2002, the Philip Stein Company has brought an innovative outlook to the world of luxury products. The Natural Frequency Technology inside Philip Stein mimics frequencies which are believed to be beneficial to life and overall well-being. Available in Whitecaps, Deck 3, Forward.

DISCOVER THE VISTA GALLERY SILENT AUCTION

Place your bid on exquisite, newly arrived auction pieces of some of your favorite Disney characters! Bidding closes at 9:00 p.m. on the final night of the cruise. Be sure to explore everything the Vista Gallery has to offer, including beautiful pieces by Britto, Thomas Kinkade, and many others. Vista Gallery, Deck 4, Midship.

HAVE YOU SEEN MAUI JIM?

See the world the way it was meant to be seen with Maui Jim's polarized, two lens technology eyewear which provides unmatched protection and comfort. Whitecaps, Deck 3, Forward.

TAG HEUER TIMEPIECES

Over 150 years of excellence in keeping time, proudly worn all over the world and available here on the Disney Dream. We have many stylish pieces for you to experience. Whitecaps, Deck 3, Forward.

TAX AND DUTY FREE HIGHLIGHT

The best brands in everything you desire. Fossil watches, Effy jewelry, Chanel fragrances and more. Ask our jewelry counter representatives about Joia pearls and Sorrelli jewelry. Whitecaps, Deck 3, Forward.

Due to port regulations, when the ship is docked, the stores will remain closed.

IMPORTANT INFORMATION

Security Notice

All Guests (including children) who wish to disembark the ship are required to present their Key to the World card at the gangway. A photo ID is also required for those Guests who are 18 years of age or older. Guests under the age of 18 are required to have a Parent, Guardian or other responsible adult sign an authorization form at the time it is given out if they wish to go ashore unaccompanied. Authorization forms are available at the gangways and Guest Services.

Cold and Flu Reminder

Please wash hands frequently and thoroughly, particularly before meals. Contact the Health Center by dialing 7-1923, should anyone in your party become ill.

Corridor Quiet Hours

As a courtesy to all our Guests, please recognize quiet hallway hours from 10:00 p.m. til 8:00 a.m.

Inclement Weather

For the safety of all Guests, outdoor events may be changed due to unforeseen weather conditions.

Environmental Message

With Disney's commitment to the Environment, please refrain from throwing anything over the Ship's side. Thank you!

No Reserved Seats Policy

As a courtesy to all our Guests, we kindly advise that the saving of seats is not permitted in the Walt Disney Theatre, and the saving of the sun loungers is not permitted on Deck 11, 12, and 13. Items left unattended will be returned to lost and found at Guest Services, Deck 3 Midship.

Smoking

For the comfort of our guests the following areas are designated as Smoking areas: - Promenade Deck (Deck 4), smoking is permitted Port Side, Aft only from 6:00 p.m. to 6:00 a.m.
- Currents - Deck 13, Forward, Port Side.
- Meridian Bar - Deck 12, Aft, Port Side, outside.
- Smoking is permitted on stateroom verandahs. Smoking is prohibited inside all guest staterooms. Guests found smoking in their staterooms will be charged a \$250 stateroom recovery fee.

Walt Disney Theatre

Theatrical performances may use artificial fog, strobe lights, pyrotechnics and other special effects. For the safety of our performers and the comfort of those around you, the use of any photography, video recording device or any electronic equipment is prohibited.

Verandah Safety

Please do not leave any combustible materials on your balcony when not present in your stateroom for safety reasons.

Morning	8:30	8:45	9:00	9:15	9:30	9:45	10:00	10:15	10:30	10:45	11:00	11:15	11:30	11:45	12:00	12:15	12:30	12:45	1:00	1:15	1:30	
FUNNEL VISION	Classic Cartoons Funnel Vision		Snow White (G) Funnel Vision			Virtual Tours Funnel Vision		The Emperor's New Groove (G) Funnel Vision				Movie Challenge Poolside Funnel Vision										
BUENA VISTA THEATRE	Wreck-It Ralph (PG) - 2D Version Buena Vista Theatre > 1:53 p.m.																					
CHARACTER	Princess Gathering Lobby Atrium		Tinker Bell Lobby Atrium			Princess Minnie Deck 4, Balcony																
FUN FOR ALLAGES	Last Minute Shopping Advice With Rachel Shopping Desk, Deck 4, Midship						Making of the Dream Evolution			Disney Cruise Line Trivia 687 Pub					 Deck Stage, Deck 11, Midship							
ADULTS	Friends of Bill W. Outlook		Group Cycling Senses Spa & Salon		Detox for Health and Weight Loss Senses Spa & Salon			Acupuncture Seminar Senses Spa & Salon			Sports Trivia 687 Pub					Family Crafts D Lounge						
VIBE 14-17 YEARS OLD	Youth Activities Open House						Hangin' in Vibe															
EDGE 11-14 YEARS OLD	Youth Activities Open House						Gender Wars															
OCEANEER LAB 3-12 YEARS OLD	Animation Antics			Wacky Relays			Piston Cup Challenge			Lunch			Stitch's Adventure Squad									
OCEANEER CLUB 3-12 YEARS OLD	Mickey's Puzzle Playtime 9:30 a.m. - 10:00 a.m.			Youth Activities Open House			Adventures in Neverland 10:30 a.m. - 11:00 a.m.			Big Top Fun Fest!			Lunch			Adventures in Neverland						
Afternoon	1:45	2:00	2:15	2:30	2:45	3:00	3:15	3:30	3:45	4:00	4:15	4:30	4:45	5:00	5:15	5:30	5:45	6:00	6:15	6:30	6:45	
FUNNEL VISION	The Little Mermaid (G) Funnel Vision						Hercules (G) Funnel Vision															
BUENA VISTA THEATRE	Lincoln (PG-13) Buena Vista Theatre						Brave (PG) - Buena Vista Theatre > 7:26 p.m.															
CHARACTER	Disney Friends Lobby Atrium			Belle Lobby Atrium			Daisy Preludes			Cinderella Lobby Atrium												
FUN FOR ALLAGES	 D Lounge			Pictionary Challenge D Lounge			Bingo Pre Sales			 D Lounge			 D Lounge			 Walt Disney Theatre						
ADULTS	Chip It Golf (12+) Lobby Atrium		Disney Vacation Club Member Celebration Evolution			Mixology Skyline (Pre Book/Nom Fee) Evolution			Disney Vacation Club Group Presentation Evolution			AndrewVictoria LIVE Lobby Atrium - Live Music			X-Box® Kinect™ Challenge D Lounge							
VIBE 14-17 YEARS OLD	Smoothie Time			That's Hilarious			Sports Deck Fun			Super Sloppy Science			YA Open House									
EDGE 11-14 YEARS OLD	Animation Antics			Sports Deck Fun																		
OCEANEER LAB 3-12 YEARS OLD	Get the Hook			Magic Playfloor			Youth Activities Open House Super Sloppy Science 4:00 p.m. - 4:45 p.m.			Mirror, Mirror D Lounge			Dinner			Anyone Can Cook						
OCEANEER CLUB 3-12 YEARS OLD	Aloha Luau			Cruisin' with Crush			Parachutes Games			Once Upon a Time			Dinner			Toy Story Boot Camp						
Evening	7:00	7:15	7:30	7:45	8:00	8:15	8:30	8:45	9:00	9:15	9:30	9:45	10:00	10:15	10:30	10:45	11:00	11:15	11:30	11:45	12:00	
FUNNEL VISION	101 Dalmatians (G) Funnel Vision						The Lion King (G) Funnel Vision						A Bug's Life (G) Funnel Vision									
BUENA VISTA THEATRE	Brave (PG) - Buena Vista Theatre						Wreck-It Ralph (PG) - Buena Vista Theatre > 12:23 a.m.															
CHARACTER	Princess Tiana Lobby Atrium		Minnie Mouse Lobby Atrium		Goofy Dk 4, Balcony		Donald Lobby Atrium		Minnie Mouse Lobby Atrium		Chip & Dale Dk 4, Balcony											
FUN FOR ALLAGES	Mickey Dk 4, Balcony		Daisy Preludes		Snow White Preludes		Ariel Lobby Atrium		Princess Aurora Lobby Atrium		 D Lounge			 D Lounge			Family Superstar Karaoke D Lounge					
ADULTS	Bingo Pre Sales		Senses Spa D Lounge		 Walt Disney Theatre		Family Superstar Karaoke D Lounge		AndrewVictoria LIVE Lobby Atrium - Live Music		 D Lounge		 D Lounge		Family Superstar Karaoke D Lounge							
VIBE 14-17 YEARS OLD	Youth Activities Open House			Teen Aquaduck			Pump It Up			Magic Show			Hangin' in Vibe									
EDGE 11-14 YEARS OLD	Anyone Can Cook			Tween Aquaduck			That's Hilarious			Hangin' in Edge												
OCEANEER LAB 3-12 YEARS OLD	Magic Show			Super Sloppy Science			GAGA Ball			POTC - Tides of Fortune			Magic Playfloor									
OCEANEER CLUB 3-12 YEARS OLD	Little Einstein's Adventure			Magic Playfloor			Camp Rocking Out!															

Symbol for activities that will be repeated during the cruise

Fold along the dotted lines and take me with you so you don't miss any of the fun!

IN THE SPOTLIGHT SERIES

JUMP UP! SERIES

CREATE & INVENT SERIES

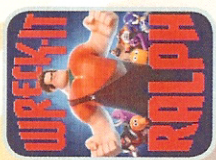
OPEN HOUSE

CLUBHOUSE SERIES

STORYBOOK SERIES

MONDAY, APRIL 29, 2013 - NASSAU

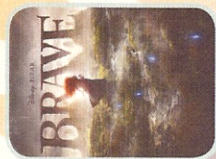
BUENA VISTA THEATRE



12:00 p.m. - 2D Version
10:30 p.m. - **DOLBY 3D**
Run Time: 1 hr 53 min
Rating: PG



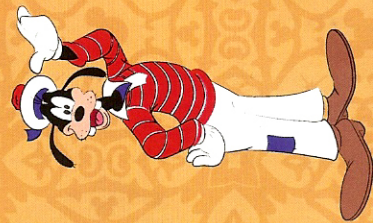
2:30 p.m.
Run Time: 2 hr 30 min
Rating: PG-13



5:45 p.m. & 8:15 p.m. - **DOLBY 3D**
Run Time: 1 hr 41 min
Rating: PG

Character Appearances

- PRINCESS GATHERING**
Lobby Atrium - 9:00 a.m.
- TINKER BELL**
Lobby Atrium - 9:30 a.m.
- PRINCESS MINNIE**
Deck 4, Balcony - 9:30 a.m.
- MICKEY MOUSE**
Deck 4, Balcony
3:30 p.m., 5:00 p.m.,
7:15 p.m. & 9:30 p.m.
- DISNEY FRIENDS**
Lobby Atrium - 3:30 p.m.
- BELLE**
Lobby Atrium - 4:45 p.m.
- MINNIE MOUSE**
Lobby Atrium - 5:00 p.m.,
7:30 p.m. & 9:45 p.m.
- DAISY DUCK**
Preludes
5:00 p.m. & 7:30 p.m.
- CINDERELLA**
Lobby Atrium - 5:30 p.m.
- DONALD DUCK**
Preludes - 5:30 p.m.,
8:00 p.m. & 9:30 p.m.



For details of daily Disney character appearances, refer to the character line on your Navigator Grid, or the digital character board in the Lobby Atrium.

YOUTH ACTIVITIES THEMED EXPERIENCES

- CLUBHOUSE SERIES**
focuses on movement and features content which appeals to younger children.
- JUMP UP! SERIES**
includes large group games & movement-oriented activities, and enthusiasm.
- SPOTLIGHT SERIES**
focuses on children's stage presence with lots of activities and enthusiasm.
- CREATE & INVENT SERIES**
will have a tactile focus allowing children to create and admire their work.
- SOLVE IT SERIES**
are less active, but will challenge children with problem/solutions-based activities.

OPENHOUSE
activities for families, adults and children of all ages to enjoy together.

SHIP DIRECTORY

YOUTH ACTIVITIES	
DISNEY'S OCEANEER CLUB	DECK 5, MID 11:30 AM - 12:00 AM
DISNEY'S OCEANEER LAB	DECK 5, MID 9:00 AM - 1:00 AM
EDGE	DECK 13, MID 10:00 AM - 1:00 AM
VIBE	DECK 4, FWD 11:00 AM - 2:00 AM
IT'S A SMALL WORLD NURSERY	DECK 5, MID 9:00 AM - 12:00 AM
RECREATION	
AQUADUCK	DECK 12, MID 9:00 AM - 11:00 PM
DONALD'S POOL	DECK 11, MID 6:00 AM - 12:00 AM
SPORTS/GOLF SIMULATORS	DECK 13, AFT 11:00 AM - 6:00 PM
GOOFY & MAX'S MINI GOLF	DECK 13, AFT 8:00 AM - 10:00 PM
GOOFY'S SPORTS DECK	DECK 12, AFT 12:00 AM - 6:00 PM
MICKEY'S POOL	DECK 11, MID 6:00 AM - 12:00 AM
MICKEY'S SLIDE	DECK 11, MID 9:00 AM - 6:00 PM
MIDSHIP DETECTIVE AGENCY	DECK 5, MID 8:00 AM - 11:00 PM
NEWB'S REEF	DECK 11, MID 9:00 AM - 6:00 PM
PORT ADVENTURES DESK	DECK 5, MID 8:00 AM - 11:00 PM
QUIET COVE POOL	DECK 11, FWD 7:00 PM - 8:30 AM
SENSES FITNESS CENTER	DECK 11, FWD 6:00 AM - 12:00 AM
SENSES SALES DESK	DECK 4, MID 3:00 PM - 9:00 PM
GENERAL INFORMATION	
ARR-CADE	DECK 11, AFT 24 HOURS
BUENA VISTA THEATRE	DECK 4 & 5, MID SHOWTIMES
DISNEY VACATION CLUB	DECK 4, MID 9:00 AM - 11:00 AM
FUTURE CRUISE SALES DESK	DECK 4, MID 5:30 PM - 10:00 AM
GUEST SERVICES	DECK 3, MID 3:00 PM - 9:00 PM
HAIR BRAIDING	DECK 11, MID 24 HOURS
MEDICAL HEALTH CENTER	DECK 1, FWD 8:00 AM - 10:00 PM
PORT & SHOPPING DESK	DECK 4, MID 9:30 AM - 11:00 AM
PRELUDES	DECK 3, FWD 4:30 PM - 7:00 PM
SENSES SPA AND SALON	DECK 11, FWD 5:45 PM - 6:30 PM
SHOOTERS PHOTO GALLERY	DECK 4, MID 8:00 PM - 8:45 PM
WALT DISNEY THEATRE	DECK 3 & 4, FWD 5:00 PM - 11:00 PM
	SHOWTIMES

SHOPPING
DUE TO PORT REGULATIONS, SHOPS ARE UNABLE TO OPEN WHEN THE SHIP IS IN PORT. SHOPS WILL BE CLOSED ALL DAY TODAY, AND REGULAR OPERATING HOURS WILL RESUME ON TUESDAY. WE APOLOGIZE FOR ANY INCONVENIENCE.

All Ashore: Approx. 9:30 a.m.
All Aboard: 2:00 a.m.

SHIP'S AGENT IN NASSAU
Nassau, Bahamas
R.H. Curry & Company, 303 Shirley St.,
P.O. Box N8168 Nassau, Bahamas
242-323-8425 or 242-357-9218

IMPORTANT NUMBERS
Fire/Security: 7-3001
Medical Emergency: 7-3000
Health Center: 7-1923

DINNER
Animator's Palace: Pacific Rim Cuisine
Enchanted Garden: Continental Market
Royal Palace: French Dinner
Dining Times: 5:45 p.m. & 8:15 p.m.

DRINK OF THE DAY
BBC (Alcoholic)
Parrot Song (Non-Alcoholic)

WEATHER FORECAST
Monday: Cloudy High: 75°F/24°C
Tuesday: Cloudy High: 75°F/24°C

Evening Attire: Optional Dress Up

DINING & LOUNGES

BREAKFAST	
CABANAS CONTINENTAL	DECK 11, AFT 7:00 AM - 7:30 AM
CABANAS	DECK 11, AFT 7:30 AM - 10:30 AM
ENCHANTED GARDEN	DECK 2, MID 8:00 AM - 10:00 AM
ROYAL PALACE	DECK 3, MID 8:00 AM - 9:30 AM
LUNCH	
CABANAS	DECK 11, AFT 12:00 PM - 2:00 PM
ROYAL PALACE	DECK 3, MID 12:00 PM - 1:30 PM
PIZZERIA AT CABANAS	DECK 11, AFT 2:00 PM - 4:00 PM
FILLMORE'S FAVORITES	DECK 11, MID 10:30 AM - 6:00 PM
LUIGI'S PIZZA	DECK 11, MID 10:30 AM - 6:00 PM
TOW MATER'S GRILL	DECK 11, MID 10:30 AM - 6:00 PM
DINNER	
ANIMATOR'S PALATE	DECK 3, AFT 5:45 PM & 8:15 PM
ENCHANTED GARDEN	DECK 2, MID 5:45 PM & 8:15 PM
ROYAL PALACE	DECK 3, MID 5:45 PM & 8:15 PM
CABANAS TABLE SERVICE	DECK 11, AFT 6:30 PM - 8:30 PM
TOW MATER'S GRILL	DECK 11, MID 6:00 PM - 11:00 PM
PALO & REMY (18+)	DECK 12, AFT 6:00 PM - 9:00 PM

(RESERVATIONS REQUIRED & COVER CHARGE APPLICABLE. DIAL #7-9734)

LATE NIGHT SNACKS

LUIGI'S PIZZA	DECK 11, MID 9:30 PM - 12:30 AM
THE DISTRICT	DECK 4, AFT 10:45 PM - 11:45 PM

ADDED FEATURES

BEVERAGE STATION	DECK 11, MID 24 HOURS
EYE SCREAM	DECK 11, MID 11:00 AM - 12:30 AM
ROOM SERVICE	DIAL 0 24 HOURS

ENTERTAINMENT - LOUNGES - BARS

Adults must be 21 and older to consume alcoholic beverages.

687 PUB	DECK 4, AFT 4:00 PM - 9:00 PM
687 PUB (18+)	DECK 4, AFT 9:00 PM - 12:00 AM
BON VOYAGE	DECK 3, MID 9:00 AM - 11:00 PM
COVE BAR (18+)	DECK 11, FWD 10:30 AM - 11:00 PM
COVE CAFE (18+)	DECK 11, FWD 7:00 AM - 12:00 AM
CURRENTS (18+)	DECK 13, FWD 11:00 AM - 12:00 AM
D LOUNGE	DECK 4, MID SHOWTIMES
DISTRICT LOUNGE	DECK 4, AFT 4:00 PM - 9:00 PM
DISTRICT LOUNGE (18+)	DECK 4, AFT 9:00 PM - 12:00 AM
EVOLUTION	DECK 4, AFT 9:30 PM - 2:00 AM
FROZONE TREATS	DECK 11, MID 11:00 AM - 11:00 PM
MERIDIAN (18+)	DECK 12, AFT 5:00 PM - 12:00 AM
OUTLOOK	DECK 14, MID SUNSET
PINK	DECK 4, AFT 5:00 PM - 12:00 AM
SKYLINE (18+)	DECK 4, AFT 5:00 PM - 12:00 AM
VISTA CAFE	DECK 4, MID 7:30 AM - 11:00 PM
WAVES	DECK 12, AFT 12:00 PM - 7:00 PM

Consumers who order raw or partially cooked, ready-to-eat food of animal origin, are hereby informed that the food is not sufficiently cooked to ensure its safety.

PORT ADVENTURES
Please check your Port Adventure tour tickets for meeting times and locations. Visit the Port Adventures Deck 5, Midship, for any questions.

IMPORTANT INFORMATION